

D8.1

Initial specification of the system

Authors	Daniel Winterstein (UEDIN), Ewen Maclean (UEDIN), Mihai Codescu (OVGU)
Reviewers	Lourdes Tavira (CSIC)

Grant agreement no.	611553
Project acronym	COINVENT - Concept Invention Theory
Date	June 30, 2014
Distribution	PU

Disclaimer

The information in this document is subject to change without notice. Company or product names mentioned in this document may be trademarks or registered trademarks of their respective companies.

The project COINVENT acknowledges the financial support of the Future and Emerging Technologies (FET) programme within the Seventh Framework Programme for Research of the European Commission, under FET-Open Grant number 611553.

Abstract

This deliverable presents a specification and architectural plan for the Coinvent system, motivated by use cases and a description of a typical user session. The architecture described is flexible, modular, and suitable for distributed computing. Analysing target examples has shown that interactive and iterative concept development should be supported. The system design uses RESTful http web services to compose building blocks. Where possible, the building blocks use technology already developed by the Coinvent group (HETS, HDTP, DOL, and HR).

Keyword list: **specification, system architecture**

Executive Summary

The Coinvent software will produce novel ideas through unfamiliar combinations of familiar ideas - a difficult computational task. We aim to develop a computationally feasible, cognitively-inspired formal model of concept creation, drawing on Fauconnier and Turner's theory of conceptual blending, and grounding it on a sound mathematical theory of concepts.

The software must support different domains and different types of user. The key target domains are mathematics and music, but it should be applicable to a wide range of domains beyond those.

We have mapped out different use cases, and analysed the requirements that stem from them. By exploring examples in different domains, we have concluded that a high level of flexibility and user control will be required. This design allows for that accordingly. A mathematical case-study where the complex numbers are invented was particularly informative in developing the requirements; this case-study has been submitted to the C3GI workshop for publication.

The use-cases have emphasised the importance of the model-generation and evaluation components as key parts of the system, alongside the concept blending engine.

We propose a modular system design, which supports the flexibility necessary to cover the varying domains. The modular design is also a good basis for coordinating the work of the distributed teams involved in the project.

Recent trends in software development have seen the growth of a RESTful variant of the model-view-controller pattern, where a json-over-http API provides a clear separation between data, operations, and user-interface. We adopt that pattern here, adding an agent/queue model to support potentially slow computations.

We are fortunate to be building on existing tools which will provide building blocks for several components.

Contents

1	Overview	1
2	A Typical Coinvent Session	1
3	Core Object: The Blend Diagram in Progress	2
4	Components	3
4.1	User Portal (Web App)	3
4.2	Blend: Concept Blender: Given a Blend Diagram in Progress, compute the Blend Concept	3
4.3	Base: Given 2 Concepts, compute a common base Concept	4
4.4	Weaken: Amalgam Finder: Given an inconsistent Blend Diagram, weaken the inputs	4
4.5	Model: Example Finder: Given a Concept, find examples / models	5
4.6	Consistency: Concept Correctness: Is it consistent?	5
4.7	Quality: Concept Scorer: How good is a Concept?	5
4.8	File: Concept Store: Store Concepts and Blend Diagrams	5
4.9	Job: Provide meta-data on slow tasks	6
5	Architecture	6
5.1	Independent components, linked via http APIs	6
5.2	Manual / Interactive Mode	7
5.3	Actor / Queue Pattern	8
5.4	System Stack Diagram	8
6	Languages / File Formats	9
6.1	3 Levels of languages: software, meta-logic, domain-logic	9
6.2	Connecting concepts: DOL (modified)	9
6.3	Mathematics: CASL	10
6.4	Music: OWL?	10
6.5	Other Domains: OWL Manchester Syntax	10
6.6	Web-service Wrapper: JSON	11
7	Open Questions and Risks	11
7.1	Software development risks and mitigation	11
7.2	References	11
A	Appendix 1: Component APIs	12
A.1	Common	12
A.2	Url structure	12
A.3	Common Inputs	13
A.4	Common Outputs	13
A.5	Envelope	13
A.6	Authentication: none	13
A.7	Cross-server requests: CORS	14

B	Component APIs	14
B.1	/blend: Given a Blend Diagram in Progress, compute the Blend Concept	14
B.2	/base: Given 2 Concepts, compute a common base Concept	14
B.3	/weaken: Given an inconsistent blend diagram in progress, weaken the concepts .	15
B.4	/model: Given a Concept, find examples	15
B.5	/consistency: Is a concept consistent?	16
B.6	/quality: How good is a Concept?	16
B.7	/file: Store Concepts and Blend Diagrams	17
B.8	/job: List open tasks	17
B.8.1	/job/\$user_name/\$job_id: Show / delete job details	18
C	User-Stories	18
C.1	As a Coinvent Researcher...	19
C.1.1	User: Logic researcher	19
C.1.2	User: Social creativity researcher	19
C.2	As a non-Coinvent developer...	19
C.2.1	User: A researcher with ontology experience	19
C.2.2	User: A developer	20
C.3	As an end-user...	20
C.3.1	Domain: Mathematics	20
C.4	Domain: Music	21
C.4.1	Other Domains	22
D	Definitions / Glossary	23

1 Overview

This document presents the architectural design for the integrated Coinvent system. Please first read:

1. The Glossary (§D)
2. The requirements / user-stories (§C) which motivate this design.

2 A Typical Coinvent Session

Coinvent covers several domains and use-cases. The following description may be taken as typical of planned usage, but not normative.

In a typical session, the user browses and selects two concepts from the rich background of domain concepts. A blended concept is then developed, which may be automatic or interactive. Examples of the concept are generated (again, either automatically or interactively, depending on the capability of the automatic software). Finally, the concept's quality is evaluated based on the examples. This is illustrated in the UML sequence diagram shown in Figure 2.

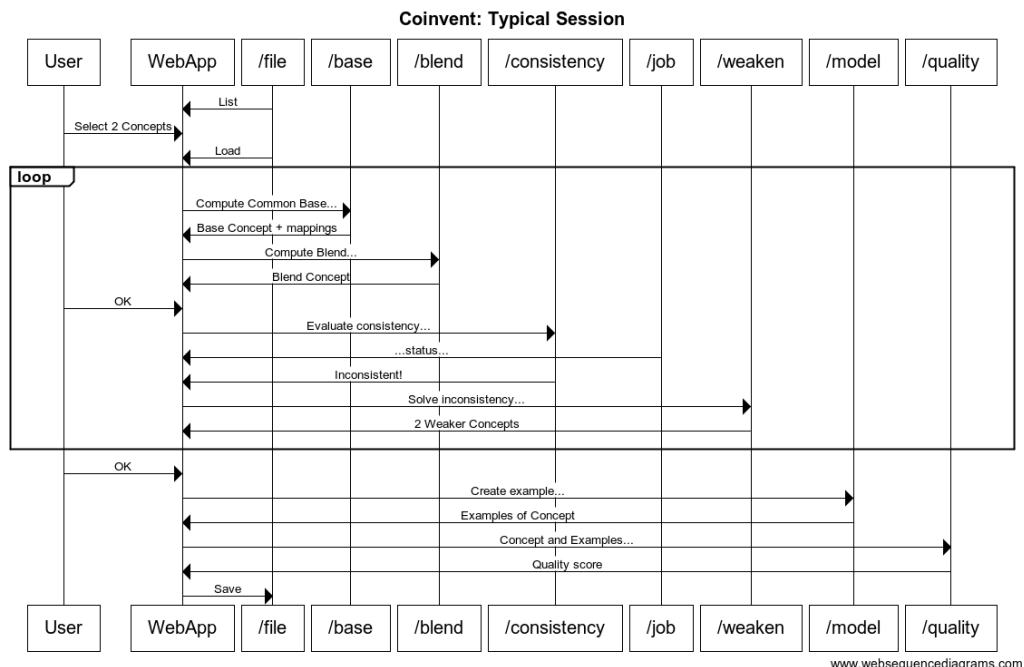


Figure 1: UML sequence diagram

3 Core Object: The Blend Diagram in Progress

The object type at the heart of Coinvent is the Blend Diagram. The specification below is intentionally broad to support several use-cases. The Blend Diagram is illustrated in the flowchart diagram shown in Figure 2.

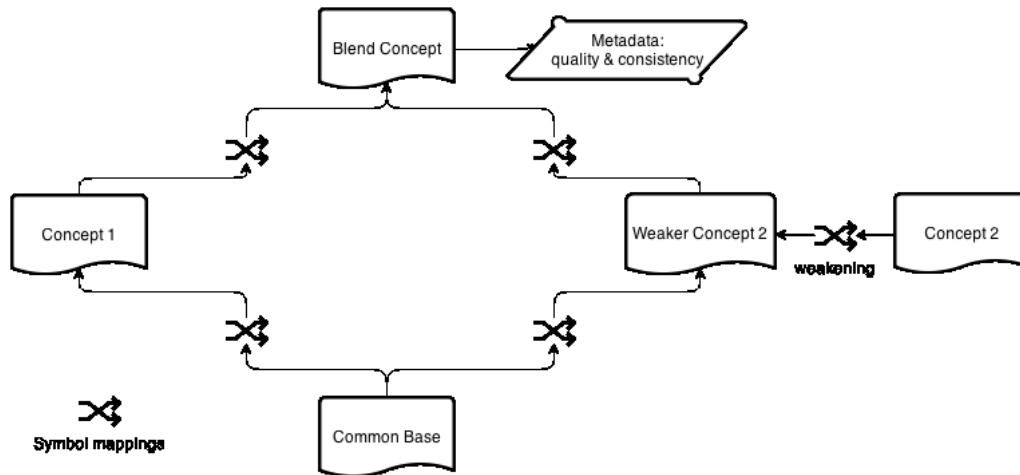


Figure 2: Flowchart diagram for blending

Crucially we must support blend diagrams which are "works in progress". The high-level process of developing a new blended concept is:

1. Pick two concepts to blend.
2. Compute a common base concept.
3. Compute a blend.
4. Evaluate the blend for consistency.
5. ...Which may lead to changes in either the input concepts, such as logical weakenings to remove the conflict. This process of evaluate-modify could be iterated several times.
6. Evaluate the blend for value, perhaps by generating examples/models and evaluating them.
7. ...This evaluation may lead to modifications, and so the whole process is iterative.

Hence we talk of a Blend Diagram in Progress to allow that blends may be developed step-by-step and iteratively.

Concepts are defined in CASL or OWL. Mappings between concepts are defined in DOL. Metadata is also defined in DOL. The Blend Diagram may be a single file, or several linked files, using DOL's support for urls.

A 'Blend Diagram' consists of:

1. A Blended Concept

2. A set of Input Concepts (typically 2)
3. Optionally, weakenings of the Input Concepts. E.g. a mapping $\text{Concept1} \leftarrow \text{WeakerConcept1}$, by dropping symbols or sentences.
4. A Base Concept, which is a common base for all the Input Concepts. If there are weakenings, then the Base is a base for the weakened concepts (not the originals).
5. Mappings from the Base Concept to each of the (weakened) Input Concepts.
6. Mappings from each of the (weakened) Input Concepts to the Blended Concept.
7. Optional metadata about each of the Concepts, such as evaluation scores, proof obligations, or relationship to other Concepts.
8. Optional metadata about the system setup, such as preferred component setup.

The Blended Concept *may* be a colimit, but it does not have to be. The Base Concept *may* be found via anti-unification, but it does not have to be.

A ‘Blend Diagram in Progress’ is simply a Blend Diagram where any part may be missing or incomplete, and Concepts do not have to be consistent.

4 Components

A Coinvent system will be made up of the following components. A component can be “manual”, which means a human being provides the result (using a web interface).

4.1 User Portal (Web App)

An interface through which the user drives the system. This will be a web-app, i.e. a browser-based ajax app.

A default user interface (UI) will be built on established toolkits, including Bootstrap, jQuery, and underscore.js.

As the project progresses other domain-specific UIs may be developed – e.g. a music viewer and player, or a child-friendly UI if we cover the fictional-beasts domain. The architecture setup deliberately keeps the UI separate, accessing the processing components via the APIs, so that other UIs can be built and by anyone.

Default implementation: To be developed.

4.2 Blend: Concept Blender: Given a Blend Diagram in Progress, compute the Blend Concept

Default implementation: HETS

As well as producing blends, this component also outputs proof obligations.

The Blender does not have to compute consistency. This is the job of the Concept Scorer.

The HETS API is currently still in development, and improvements are needed before it fits all requirements. Specific open issues are logged here: <https://github.com/coinvent/coinvent/issues?labels=HETS&page=1&state=open>

4.3 Base: Given 2 Concepts, compute a common base Concept

This component finds a common base theory, and mappings to the input concepts. That is, it fills in the bottom half of the blend diagram. The common base is not always unique – there may be a choice of several.

A common base and mappings defines an analogy between the concepts. This component does not itself calculate the blend. However if a push-out based /blend component is used (as we envisage), then the base and mappings do uniquely determine the blend concept.

Default implementation: HDTP, which works via anti-unification.

Required work: HDTP currently uses a custom Prolog-based format. To plug into Coinvent (or HETS without Coinvent), a translation layer will be developed so that HDTP can take in OWL or CASL.

Note: HDTP will remain stateless. It will not itself manage sessions or run a web-server.

4.4 Weaken: Amalgam Finder: Given an inconsistent Blend Diagram, weaken the inputs

Initial implementation: manual

Since the colimit operation (and blending in general) can generate inconsistent blends, it may be necessary to weaken the input theories until a consistent blend is found.

The Amalgams team will lead on this, exploring the generalization operation for amalgams described in [4], and developing a stand-alone Theory Weakener (TW).

The TW will not be capable of computing colimits itself; therefore it requires a feedback loop with HETS.

In case the colimit is inconsistent, the TW analyzes the input theories and the inconsistencies in the blend and weakens the theories based on this information by removing sentences from the input theories. This removal will be based on heuristics known from amalgam reasoning [4]. The whole procedure is repeated until a consistent colimit is found.

For the implementation of the TW, we are currently investigating using an Answer Set Programming (ASP) approach, calling on online ASP solvers. This allows us to (i) rapidly implement prototypes, (ii) make use of the highly optimized search problem algorithms that drive modern ASP solvers [2], and (iii) use the advantages of online ASP solvers like oclingo [1] that will re-use partial solutions of earlier weakenings. Towards this, a weakening operation is modeled as sequence of theory transitions, based on atomic operations that each affect the different types of sentences (eg. `SubClassOf`, `EquivalentTo`, `ObjectProperty`, etc. for OWL) within theories. Perceiving the theory weakening as a sequence of theory transitions also allows us to exploit the iter-

ative problem solving capabilities of modern ASP solvers and to re-use coding strategies known from other kinds of state transition based problems that are typically modeled in ASP [2].

4.5 Model: Example Finder: Given a Concept, find examples / models

This is a key part of creative blending, especially around evaluating a concept. It is noticeable that when people learn and evaluate concepts, they often do so via examples.

The meaning of "example" is domain specific.

In mathematical theories, an example is a model, which is itself a theory. E.g. in the complex numbers case-study (c.f. https://github.com/coinvent/coinvent/tree/master/HETS/complex_numbers), an example is the refined theory where ' $i^2 = -1$ ' has been added to provide a constructive formula for the existential axiom ' \forall vectors x,y, \exists vector $z, x*y = z$ ' (note: in the .dol file, this existential axiom is implicit in * being a total function).

In musical theories, an example is a piece of music conforming to the theory.

The initial implementation will be manual. Automated implementations will often be domain specific (e.g. we may use a Hidden-Markov-Model based music generator), and may not be possible in all domains. For relatively simple theories (e.g. small models to finite first-order theories), model-finders such as MACE can be used, possibly via HETS.

4.6 Consistency: Concept Correctness: Is it consistent?

Blending can lead to inconsistent concepts. HETS has support for using various theorem provers to check for consistency. However detecting inconsistency is not always easy. In the complex numbers example, it has been found to require manually guided proofs.

Any proof of an inconsistency of the blend can give hints about which axioms to look at (namely, the axioms used in the inconsistency proof). This component should therefore provide feedback where possible, to enable a workflow enriched with vision and debugging techniques.

4.7 Quality: Concept Scorer: How good is a Concept?

A key part of creativity is judging the quality of the outputs; discarding low-value concepts, and selecting valuable ones. How to do this is one of the research questions this project will explore. HR has automatic scores for detecting interesting concepts, which it would be interesting to incorporate.

Default implementation: Manual

4.8 File: Concept Store: Store Concepts and Blend Diagrams

Must provide save and load over http.

Note that most of the other components do *not* depend on a dedicated storage component. They can work with concepts stored on *any* server, as long as the format is correct and the concept

can be identified by url. The User Interface does require a file storage component to store blend diagrams as they're modified.

Default implementation:

- File-system backed. By adding git to the file-system we can provide integration with Onto-hub.

4.9 Job: Provide meta-data on slow tasks

As discussed in §5, some of the system tasks are not suitable for a fast blocking API. These tasks will create jobs, which run on the server until complete. The /job component provides an API for fetching information on the state of the job queue and a specific job. This allows the web-portal (or other user interfaces) to see the state of a blend, and a way to report on any errors.

5 Architecture

5.1 Independent components, linked via http APIs

Requirements:

1. The components of the system may be developed in different languages.
2. The system should be easy to maintain and extend.
3. The system should support both interactive use, and repeatable scripted use.

Requirements (1) and (2) above suggest a loose coupling between components. The use of http-based APIs is an established way of achieving this. In particular, http-based APIs with a REST-like setup (i.e. the url follows a simple readable structure) and using JSON to encode data are now becoming the standard for modern software development.

JSON will provide a wrapper for API-level information. JSON is not part of the file format for Blend Diagrams. Blend Diagrams are written in DOL + OWL or CASL, and sent within a JSON packet as JSON strings.

An added benefit of this architecture is that it provides flexibility regarding the hardware infrastructure. The components of the Coinvent system may be run either on a single server, or across multiple servers.

Supporting Alternative Component Implementations To provide flexibility, especially across varied domains, the architecture is organised into separate components. This document describes default implementations for each component. However any component can be provided by an alternative implementation. Any system which fits the API for a Coinvent component slot, can fill that slot.

We envisage certain components will indeed have multiple implementations: HETS and HR3 are both candidates for the /blend and /consistency slots. The /model slot will benefit from domain-specific implementations (e.g. a music generator).

Component Setup With the architecture supporting different implementations for components, the system requires a setup describing which implementations to call.

Each component has a default implementation, which will be specified in a config file.

The Social Creativity strand of the Coinvent project requires that different setups can be run and interact. In order to support this from within one server, we allow that a Blend Diagram in Progress can carry meta-data about which component implementations to call (if different from the defaults). This meta-data might include implementation-specific configuration parameters.

Scripting the system Requirement (3) relates to research users, who need to run repeatable concept development sessions. This requirement is met in this architecture by scripts which drive the API. Such scripts would most naturally be developed in javascript, perhaps using a test-runner. Indeed, the test scripts we develop as part of software QA will provide templates for scriptable use.

Where steps involve systems such as the interactive theorem prover Isabelle, it is an open question how we script such systems within Coinvent. HETS has some support for this (call 'hets -I' and enter "help"), although the HETS API does not expose it.

Software Wrapped as a Server "Calculation" software such as HDTP will be incorporated into this framework using a server which "wraps" the low-level software. E.g. the other components connect to the HDTP-server over http, and the server manages calling HDTP itself.

Top-level Stateful, Low-level Stateless Calculation software will be stateless. This is simpler, and avoids tying the low-level components to the bigger system.

In places it is necessary to page through results. E.g. HDTP can produce multiple outputs for some inputs. The first call would return one result, then a mechanism is required to access the 2nd or a 3rd result.

This will be handled via input flags, and simply repeating the calculation asking for more outputs (i.e. iterative deepening).

The overall system will be stateful, because being stateful is the most natural way to support several required features:

- Slow tasks, where a job is started, runs, finishes later.
- Interactive UI, where the user has a fixed reference point to view a developing blend.

The state would be handled at the top level. The components (HDTP, HETS-as-a-colimit-calculator, etc) are used in a stateless manner.

5.2 Manual / Interactive Mode

The goal of the Coinvent system is to be semi-automatic. Certain components – such as evaluating musical quality – are best handled manually, at least in this project. There are also components,

such as consistency checking, where a fully-automatic solution is desirable, but for mathematically difficult theories, this may not be possible. We therefore support a manual / interactive mode for each component.

This works as part of the actor model. Certain actors correspond to systems, e.g. the "hets" user connects to the HETS system. Other actors correspond to people. For these actors, the UI will show a list of open job requests sent to them, and an interface for responding to a job. The user is then free to call on any outside tools they wish (e.g. working via another theorem prover) in order to complete the job.

These responses will be stored, so that sessions can be re-played.

5.3 Actor / Queue Pattern

Requirements:

1. The components of the system call on each other to perform tasks...
2. ...but these tasks may be slow to complete. Since tasks may require human input (eg. a proof in an interactive theorem prover like Isabelle), a task could even take days.

This means a standard call/response would timeout. We therefore adopt an actor / queue based pattern (see https://en.wikipedia.org/wiki/Actor_model).

Each top-level component is an actor, which can send and receive messages to other actors. Each API request is either fast or slow:

1. Fast requests get an immediate result within the http response.
2. Slow requests send an immediate receipt response with a job-id (using http code 202 "accepted for processing"), followed later by a result (which may indicate failure). This later message is either pushed via a callback, or pulled by polling.

5.4 System Stack Diagram

Default User Interface		
AJAX	jQuery	underscore templates
Web Browser		
Java web-service wrapper		
HDTP	Files	HETS Server ¹
SWI Prolog ²	Git ³	Theorem Provers
OS: Linux (Ubuntu)		

1 The HETS server provides an http API. This is lower-level than the Coinvent API.

2 HDTP might be re-written by Martin M²hrmann to use a different backend.

3 Git integration provides OnToHub integration without a hard dependency.

6 Languages / File Formats

Coinvent will focus on human-readable text-file formats. A couple of formats for concepts will be supported, with the DOL language used to describe the connections between concepts.

6.1 3 Levels of languages: software, meta-logic, domain-logic

1. The outer language (json) is used to connect software components. E.g. specifying software inputs and callbacks, reporting on job-status, etc.
2. The meta-logic language (DOL) is used to describe the mappings between concepts.
3. The domain-logics (OWL, CASL) are used to describe actual concepts.

6.2 Connecting concepts: DOL (modified)

DOL (Distributed Ontology, Modeling and Specification Language) is a language for describing how ontologies connect. DOL is currently in development by the OntoOp group. It is used by the HETS system. This integration with HETS makes it a good choice for Coinvent.

DOL is both larger than we need, and does not provide a couple of features we require. So we specify a modified version of DOL. We will work with the DOL team aiming to converge on a true subset of DOL.

DOL subset: Supported Language Terms Coinvent does not need all the features of DOL, and so we specify a reduced subset of DOL which should be used. Sticking to a smaller set reduces the learning curve for new Coinvent users.

Briefly, the supported symbols are:

- ‘logic’ Specify the Concept language, e.g. ‘logic OWL’
- ‘ontology’ Start defining a Concept.
- ‘end’ Finish defining a Concept.
- ‘view’ Specify a mapping between Concepts, e.g. ‘view MyView : A to B =’
- ‘with’ Introduces a symbol mapping to rename symbols from a theory. A typical use in Coinvent would be as part of a combine statement.
- ‘combine’ Compute the colimit, e.g. ‘ontology B = combine I1, I2’
- ‘hide’ Used in a mapping to drop a symbol.
- ‘=’
- ‘:’
- ‘,’ List separator.

- \mapsto Part of a mapping, e.g. zero \mapsto 0
- ‘%predicate(value)%’ An annotation on a sentence.
- ‘%(label)%’ A line label.
- ‘%%’ Starts a comment
- ‘%implied’ Marks a proof obligation (i.e. a statement which is required to be true, but has not been proved)

DOL: Extra Conventions and Language Terms There are some features Coinvent needs which DOL does not yet provide (see the project’s GitHub issue tracker, <https://github.com/coinvent/coinvent/issues?labels=DOL+%2F+file-formats>). Where possible, we fit these within the current DOL specification by specifying non-standard annotations.

1. Dropping symbols from a Concept: ‘hide’ can be used when defining a mapping to drop sentences as well as symbols.
2. Marking inconsistent sentences: by the annotation ‘%inconsistent’
3. Marking relative importance of sentences: by the annotation ‘%importance(X)%’, where X is a number in the range [0,1]. This is interpreted by the /weaken component. How this is interpreted is not fixed, but it may be interpreted as a probability that the sentence holds.
4. Evaluating Concepts. That is, adding metadata which describes how good a concept is. Format TBD.

6.3 Mathematics: CASL

CASL is the first order logic language used by HETS. We will adopt it as the language Coinvent should use for mathematical concepts.

6.4 Music: OWL?

The music team are investigating the use of OWL by producing a worked example of cadence blending.

It is anticipated that musical idioms will comprise both rules (e.g. constraints on a cadence) and statistical parts (e.g. hidden-markov-models).

6.5 Other Domains: OWL Manchester Syntax

The established OWL description logic, via the Manchester Syntax, should be used for other domains.

6.6 Web-service Wrapper: JSON

The web-service components (see below) will use JSON as a black-box wrapper, for web-services to talk to each other. I.e. JSON is used to encode commands, such as "blend these concepts", and describe results, such as "success" or "failure due to timeout".

JSON is the best choice here, because it's a universal standard.

Low-level components (e.g. HDTP) will not take in JSON. That would be done by a web-service wrapper, which then calls HDTP.

7 Open Questions and Risks

Many development questions remain open at this stage in the project. Notable open questions are:

1. How to generate examples in the different domains.
2. How to use "3rd party systems" such as the Isabelle interactive theorem prover within Coinvent.
3. How to weaken theories to resolve inconsistencies?
4. What format is best for musical idioms?

7.1 Software development risks and mitigation

Much of the Coinvent system builds upon existing components (HETS, HDTP, DOL), or can use standard software and approaches (the UI). These components therefore have a relatively low risk. Though note that all the base components require some development to meet the needs of this project.

Higher risk components are /model and /weaken. How these functions can be implemented is a research topic. The problems are deep, and no readily adaptable solution exists. The team do have relevant expertise in techniques to tackle these tasks, but, as with any open-ended research task, there is a high level of technical risk.

To mitigate these risks, the system design allows for components to be fulfilled by manual interactive input. This means work on automated solutions to /model and /weaken is not a blocker for use of the system.

7.2 References

- CASL: user manual http://www.informatik.uni-bremen.de/cofi/wiki/index.php/CASL_user_manual, and reference manual http://www.informatik.uni-bremen.de/cofi/wiki/index.php/CASL_reference_manual
- DOL: <https://github.com/tillmo/DOL>

- HDTP: http://link.springer.com/chapter/10.1007%2F978-3-642-54516-0_7
- HETS: http://www.informatik.uni-bremen.de/agbkb/forschung/formal_methods/CoFI/hets
- OWL Manchester Syntax: <http://www.w3.org/TR/owl2-manchester-syntax>
- ASP:
 1. M.Gebser et al, Engineering an Incremental ASP Solver. In International Conference on Logic Programming (2008), no. 1.
 2. M.Gebser et al, Answer Set Solving in Practice. Morgan and Claypool, 2012.
 3. M.Gelfond and V.Lifschitz, The Stable Model Semantics for Logic Programming. In Proceedings of the International Conference on Logic Programming (ICLP) (1988).
 4. S.Ontan and E.Plaza, Amalgams: A formal approach for combining multiple case solutions. In ICCBR (2010).

A Appendix 1: Component APIs

A.1 Common

This document uses JSDoc to describe input and output types, e.g. ‘?string‘ would mark an optional string. For describing urls, \$variable is used to mark a variable within a url.

A.2 Url structure

The default server is `coinvent.soda.sh` and the default port is 8400.

For each component, we provide a default implementation, and these follow a common url pattern. Other implementations are possible, and may not follow the pattern.

```
http://server:port/component/actor
```

This means we can have multiple different instances of a component, e.g. `http://coinvent.soda.sh:8400/blender/hets` and `http://coinvent.soda.sh:8400/blender/hr3`

The actor may refer to a piece of software (e.g. `hets`), or to a user, which allows that any component function can be fulfilled manually by a human being. E.g. `http://coinvent.soda.sh:8400/blender/alice`

This structure anticipates multi-agent setups, which will be wanted for the investigation of social aspects later in the project.

The default file store also fits into this pattern, with `component=files`. E.g. the user Alice’s houseboat file could be `http://coinvent.soda.sh:8400/file/alice/houseboat.omn`

A.3 Common Inputs

‘Concept’ type: Concepts can be provided as the source text itself, or as a uri for a file which contains the source text. A DOL file may contain more than one concept. To reference a concept within a file, we follow the DOL / MMT / Ontohub convention and write `file_uri?ontology_name`.

‘Mapping’ type: Mappings are provided either as:

1. JSON maps, e.g. `""sun": "nucleus", "planet": "electron""`
2. DOL fragments, using only the inner part of the DOL mapping, e.g. `"sun \mapsto nucleus, planet \mapsto electron"`.

‘BlendDiagram’ type: A packet of data comprising the Concepts and Mappings for a blend diagram in progress. The component Concepts of a BlendDiagram use the names ‘base’, ‘blend’, ‘input1’, ‘input2’, and the Mappings ‘base_input1’, ‘base_input2’, ‘input1_blend’, ‘input2_blend’. If weakenings are used, then these Concepts are names ‘weakinput1’, ‘weakinput2’, and ‘weak-base’, with corresponding Mappings. Can be provided as the source text itself, or as a uri for a file containing the BlendDiagram. Can be in JSON or in DOL, identified in the case of a uri by a `.json` or `.dol` file-ending.

‘sentence’ type: A specific sentence within a Concept. Either the sentence itself, or a DOL annotation labelling that sentence.

All inputs are of course sent URL encoded.

A.4 Common Outputs

With the exception of files, all outputs are in JSON and have a common envelope.

A.5 Envelope

Each response has the same top level structure:

```
{
"success": {boolean} usually true,
"cargo": the meat of the response, or null if it is a slow asynchronous request,
"jobid": {string} The job id for slow requests,
"messages": {string[]} an array of notifications for the user -- usually null,
"cursor": {uri} the next page in a series -- usually null
}
```

A.6 Authentication: none

No authentication is required at this stage in the project.

A.7 Cross-server requests: CORS

Cross-server calls – where a webpage hosted on one server makes an ajax request on another server – are supported via CORS. This means they just work, although CORS may not work with older browsers.

B Component APIs

B.1 /blend: Given a Blend Diagram in Progress, compute the Blend Concept

Default implementation: HETS

Default end point: `http://coinvent.soda.sh:8400/blend/hets`

Parameters:

- lang: owl|casl
- input1: {concept}
- input2: {concept}
- base: {concept}
- base_input1: {mapping} from base to input1
- base_input2: {mapping} from base to input1

Response-cargo:

```
{
blend: {concept} which is a blend of input1 and input2,
input1_blend: {mapping} from input1 to blend,
input2_blend: {mapping} from input2 to blend
}
```

B.2 /base: Given 2 Concepts, compute a common base Concept

Default implementation: HDTP

Default end point: `http://coinvent.soda.sh:8400/base/hdtp`

Parameters:

- lang: owl|casl
- input1: {concept}
- input2: {concept}
- base: {?concept}
- base_input1: {?mapping} from base to input1
- base_input2: {?mapping} from base to input1
- cursor: {?url} For requesting follow-on results.

Response-cargo:

```
{
base: {concept} which is a common base for input1 and input2,
base_input1: {mapping} from base to input1,
base_input2: {mapping} from base to input2
}
```

B.3 /weaken: Given an inconsistent blend diagram in progress, weaken the concepts

This is the key method for Amalgams.

Default implementation: Manual (Amalgams later in the project)

Default end point: `http://coinvent.soda.sh:8400/weaken/$user_name`

Parameters:

- `blend_diagram`: A Blend Diagram in Progress
- `cursor`: `{?url}` For requesting follow-on results.

Response-cargo: A weakened blend diagram

Open question: What information should be passed to `/weaken` to guide it?

For example, it might take in line-numbers or DOL labels marking sets of inconsistent s

B.4 /model: Given a Concept, find examples

Default implementation: Manual

Default end point: `http://coinvent.soda.sh:8400/model/$user_name`

Parameters:

- `lang`: `owl|casl`
- `concept`: `{concept}`
- `cursor`: `{?url}` For requesting follow-on results.

Response-cargo:

```
{
models: {concept[]}
}
```

B.5 /consistency: Is a concept consistent?

Default implementations:

- HETS for automated consistency checks.
- Manual where HETS fails.
- Can we include semi-automated consistency proofs, e.g. using Isabelle?

Default end point: `http://coinvent.soda.sh:8400/consistency/hets`

Parameters:

- lang: owl|casl
- concept: {concept}
- goal: {?sentence} For focused testing.

Response-cargo:

```
{
result: {?boolean},
inconsistent: {sentence[]},
unknown: {sentence[]}
}
```

B.6 /quality: How good is a Concept?

Default implementation: Manual.

HR has automatic scores for detecting interesting concepts, which it would be interesting to explore.

Quality scoring will most likely work on examples, rather than on the concepts directly.

Default end point: `http://coinvent.soda.sh:8400/quality/$user_name`

Parameters:

- lang: owl|casl
- concept: {concept}
- models: {concept[]}
- metric: {?string} Optional name of a metric to score against.

Response-cargo:

```
{  
score: {number} A number. The [0, 1] scale is recommended for most metrics.  
}
```

B.7 /file: Store Concepts and Blend Diagrams

Must provide save and load over http.

Note that most of the other components do not depend on the /file component. They can work with concepts stored on any server (and identified by uri). The User Interface

Default implementation: file-system based, with git support (allowing for Ontohub integration)
Default end point: `http://coinvent.soda.sh:8400/file/$user_name`

Load Parameters:

- Use the path (i.e. the slug) to specify a file, using the convention `‘/files/$user_name/$slug’`.
E.g. `‘http://coinvent.soda.sh:8400/files/alice/stuff/alices_boat.dol’`
would fetch the file stored at `‘$base_dir/alice/stuff/alices_boat.dol’`

Note that Ontohub uses the convention: `‘/$repository/$path_to/$file’`. The convention here

Response: the file

Save Parameters:

- Use the path (i.e. the slug) to specify a file.
- Use http PUT or the parameter=value pair `‘action=save’`
- The post body contains the text to save.

Response: the file

A save (or a delete) triggers a git commit and push.

Distributed git repositories can be linked together, and in particular OntoHub uses git-based storage. This allows for connection with OntoHub.

Delete Parameters:

- Use http DELETE or the parameter=value pair `‘action=delete’`

Response: just the envelope, indicating success or failure

B.8 /job: List open tasks

Default implementation: Coinvent Integration+UI module

Default end point: `http://coinvent.soda.sh:8400/job/$user_name`

Parameters:

- status: `{?string}` open|closed Optional filter.
- cursor: `{?url}` For requesting follow-on results.

Response-cargo:

```
{
jobs: [
{
id: {string},
status: open|closed
}
]
}
```

B.8.1 /job/\$user_name/\$job_id: Show / delete job details

Default implementation: Coinvent Integration+UI module

Default end point: `http://coinvent.soda.sh:8400/job/$user_name`

- Use the path (i.e. the slug) to specify a file.
E.g. `'http://coinvent.soda.sh:8400/job/alice/1234'`
would fetch details on job id 1234, assigned to Alice.

If a job-id is not specified, this endpoint will list jobs (see above).

- action: delete Use this, or the http method DELETE, to request cancellation of a job.

Response-cargo:

```
{
job: {
id: {string},
status: open|closed
}
}
```

This may optionally provide more information about the job, such as a progress update.

C User-Stories

This appendix presents the motivating requirements for the integrated Coinvent system. It does so via the agile method of user-stories: requirements are driven by example use-cases of who needs

it and why.

C.1 As a Coinvent Researcher...

C.1.1 User: Logic researcher

Task: Explore creating and using blends Needs:

- Specify concepts.
- Create blends.
- Evaluate blends (this is domain specific – see specific domains below).
- Reliably replay a "session" of concept blending plus associated concept development (such as theorem proving or example music generation).

Success criteria: The software supports research, leading to papers on blending which extend the state of research. Priority: High.

C.1.2 User: Social creativity researcher

Task: Explore multiple users/agents creating and using blends Needs:

- As for Logic Researcher, plus...
- Agent-based system to model and explore social interactions.
- Setup different starting models for agents.

Priority: This is a key strand of the project plan. For Year 2/3.

C.2 As a non-Coinvent developer...

Later in the project, we aim to run Coinvent hackathons, where other developers use Coinvent to build things.

C.2.1 User: A researcher with ontology experience

Task: Explore concept blending. Needs: Same as for a Coinvent Logic Researcher, plus a user-friendly UI and documentation.

C.2.2 User: A developer

Task: Making a creativity tool for a domain of their choice (e.g. one of the domains considered below). Needs:

- The system must be flexible enough to support:
- Modified back-end components.
- Other user interfaces, built on top of the API.
- Enough documentation to support 3rd party developers, including a Hello-World example project.

Success criteria: Developers from outside the project produce projects (which may be just proof-of-concept scratch projects) using Coinvent. Priority: For Year 3.

C.3 As an end-user...

C.3.1 Domain: Mathematics

User: Coinvent researcher Task: Explore the blending of mathematical concepts. Use-case: Define concepts. Pick 2 concepts as input, and get back a blended concept. Further develop the blend to resolve "quality issues" such as. Further develop the blended concept to create interesting outputs – possibly models / examples. Requirements:

1. A format which can define mathematical concepts.
2. Specify two theories, and blend them to produce a new concept.
3. Weaken input concepts (to remove inconsistency) and strengthen output blends (to reach "interesting" results).
4. Given a concept, check it for consistency.
5. Given a concept, produce examples / a model.
6. Given a concept, identify the unresolved questions in the blend (for complex numbers, the missing formula $x.y=?$).
7. Solve the unresolved questions in the blend, adding axioms and resolving any proof obligations.

Note that some steps may have to be manual or semi-automated, and so it is a requirement that the system supports interactive reasoning.

Success criteria: It works. Priority: High. This is a project deliverable.

User: Non-mathematical Analyst (e.g. someone who would normally use Excel) Task: Quantitative analysis of data Wants: To meaningfully analyse some data using bayesian mathematical models. Specific use-case: Interpret Twitter conversational data on a topic, in terms of types of person and types of conversation. Needs:

- A friendly UI.
- To create a model by blending pre-defined models.
- To understand what they've made without understanding the source code – i.e. a clear natural language summary of the model.
- To apply the model to the data...
- ...And get back results they can understand (e.g. pie-charts and time-series charts with meaningful labels).

Success criteria: It works and is adopted for use by a researcher or analyst outside the project. Priority: Medium. This is an achievable valuable goal within the important mathematics thread.

C.4 Domain: Music

User: Coinvent Researcher Task: Explore the blending of musical idioms Use-case: Define idioms. Pick 2 musical idioms as input, and get back a blended idiom. Given an idiom, evaluate it, by creating examples and subjectively assessing them. Requirements:

1. A format which can define musical idioms. Open question: What levels of structure does this have to capture?
2. Optional? The ability to statistically analyse a body of example music as part of fleshing out a musical idiom (e.g. creating an HMM for use in generation).
3. Blend idioms to produce new idioms. This requires support for weakening or otherwise resolving clashes, as fully-fledged idioms are likely to be logically inconsistent.
4. Given an idiom, produce example music.
5. Optional: Support for evaluating music / idioms.

Success criteria: It works. Priority: High. This is the basis for all music-domain work.

User: A Listener Task: Create music they like Use-case: Pick 2 musical idioms as input, and get back a newly-created high-quality piece of music. Success criteria: A group is identified who adopt Coinvent-based software as part of their music listening software. Or a Coinvent-created piece of music gains small-scale public success. Priority: Low. This is a very hard task and may not be achieved within this project.

User: An avant-garde composer Task: Create music to use as inspiration / source material Use-case: Pick 2 musical idioms as input, and get back a newly-created low-quality piece of music. Success criteria: A composer collaborates with the project and uses Coinvent to create a piece of music they then perform. Priority: For Year 2/3. This is an achievable goal for this project.

C.4.1 Other Domains

Domain: Fictional beasts User: A child Task: Create a fictional beast Use-case: Pick two input beasts (using a simple user-friendly GUI), and get back a fictional blended beast with a mini-story about how it behaves. Wants: To play around creating fun new animals and interacting with them. Needs:

- A very friendly UI.
- An ontology of animals behind it.
- To specify two animals to blend.
- To get a pictorial view of the blend.
- To see some behaviour, e.g. robot cat chases mutant mice, stops to drink some milk, short-circuits.

Success criteria: Adopted for use by a school, or distributed publicly as an app. Priority: Medium. For Year 2. This is an achievable goal for this project.

Domain: Mechanical engineering. User: A mechanical engineer. Task: Create a new product, and streamline the 3D modelling, requirements checking, and safety testing by leaning on an existing database. Wants: To specify a new component (e.g. a car ejector seat), which has aspects of existing components. Then get a CAD model which fits the spec. Priority: Low. This lacks a sponsor within the project.

Domain: Poetry User: A poet Task: Create poetry fragments to use as inspiration / source material Use-case:

1. Pick 2 concepts as input, and get back a newly-created metaphor and sentences illustrating it.
2. Pick a concept and a property, and get back a 2nd concept which when blended with the first provides a metaphor for the desired property.

Success criteria: A poet collaborates with the project and uses Coinvent to create a piece of poetry they then publish. Priority: Medium. This is an achievable goal for this project. This is an accessible domain for technology testing, and it fits with the research interests of Goldsmiths group.

User: A reader **Wants:** To be entertained or stimulated. **Success criteria:** Producing poems that are rated as interesting, either by literature critics or a more general readership. **Priority:** Low. This is an accessible domain for technology testing, and it fits with the research interests of Goldsmiths group. However there is considerable extra work required for software to go from a blended-concept metaphor, to a complete poem.

Domain: Recipes **User:** An amateur cook **Wants:** To create a new recipe or meal-plan by blending ideas. **Success criteria:** Some new and tasty recipes. **Priority:** Low. This is an accessible domain for proving the technology. However there is so much cooking material online, that a new resource would not be very valuable.

D Definitions / Glossary

Collecting technical terms in use across the Coinvent project. Some of the terms marked as equivalent here do have different meanings in certain domains, but are used equivalently within the Coinvent space.

ABox assertions about an individual – describes an instance. See TBox

ASP Answer Set Programming, a class of automated reasoning systems for "hard" boolean satisfiability searches.

Base A common shared starting theory.

Blend Any theory created by merging two parent theories. Might be a colimit (but needn't be).

Blendoid a Theory created by blending

Cadence sequence (progression) of chords which concludes a section of music. E.g. fifth to root, D, G in key of G.

Colimit Pushout. A category-theory term which can be applied to blending. The least-specific specialisation which combines two theories with a common base.

Concept No one definition, but probably a Theory.

Conservativity / conservative extension: "Safely" extending a theory by adding statements about new constants which do not affect the old statements. See https://en.wikipedia.org/wiki/Conservativity_theorem.

DOL HETS language for describing the relationship between theories. Can work with any ontology language. So DOL does not itself describe theories.

Entity Individual

GCT Generalised Chord Type, e.g. 0,[0,4,7] is C-major, if in the key of C.

HETS the Heterogeneous Tool Set. A meta-logic system, which can map between logics and theorem provers.

Idiom a Theory in music.

Interpretation a symbol mapping between two theories with the following proof obligation: the target theory must extend (ie. logically entail) the source theory. Most likely, the sentences from the source theory are just included (with symbol renaming) into the target.

IRI International URI = URI which can use unicode. A CURIE is a short fragment, which with extra context can be resolved into a URI (e.g. like a relative url).

Mapping signature morphism = how to translate symbols between two domains. E.g. “bank” here maps to “river_bank” there.

Model An example of a Theory (which may be a more concrete theory, or a domain-specific example, such as a a piece of music).

Ontology Domain = Space = Theory = Idiom

OWL a description language for writing ontologies, most commonly OWL2 using Manchester syntax

Sentence A statement in a Theory. E.g. an axiom.

Signature the set of symbols used in a theory.

Sort Type = Class. E.g. “Person” or “Boat”

Symbol Term. Anything used in a Sentence. E.g. “x” or “+” or “Chord”

TBox assertions about a domain (T for terminology).

Theory a set of symbols (the signature) and sentences.